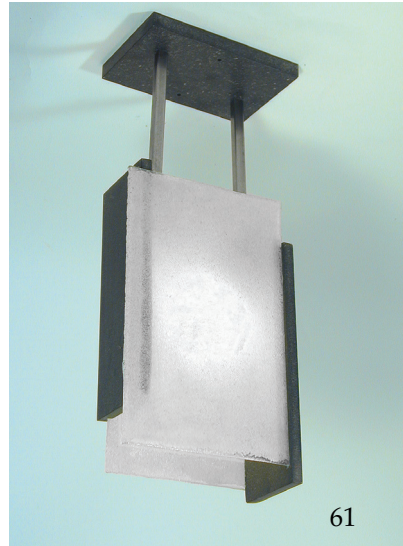




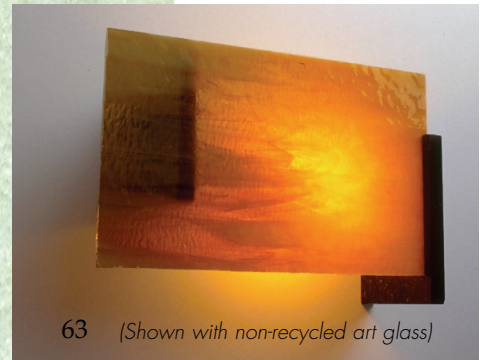
62



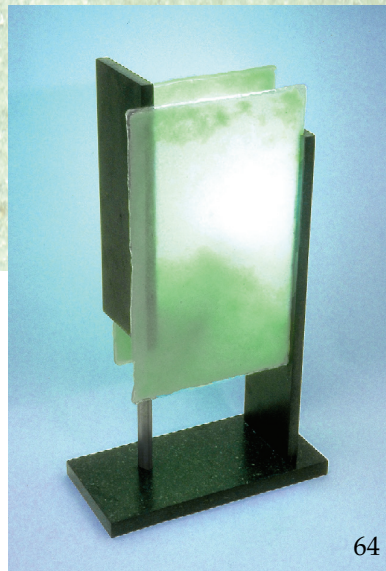
61

FRANKIE
 GOES
 FLUORESCENT

Environmentally conscious...
 and handsome, too



63 (Shown with non-recycled art glass)



64



1998 Award Winner

David Bergman Architect

V: 212 475 3106
 F: 212 677 7291
 241 Eldridge Street 3R
 New York, New York 10002

info@cyberg.com
www.cyberg.com

FRANKIE GOES FLUORESCENT

Frankie Goes Fluorescent fixtures are lamped with 26 watt 4-pin compact fluorescent bulb with GU24 sockets.

Recycled glass shades are available in white, pale green or cobalt blue.

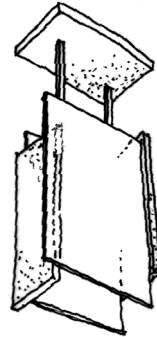
Solid portions of fixtures are made of an environmental bio-composite resembling granite.

All designs ©David Bergman

David Bergman Architect

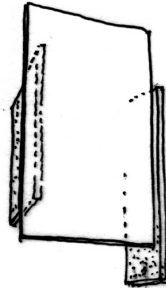
V: 212 475 3106
F: 212 677 7291
241 Eldridge Street 3R
New York, New York 10002

info@cyberg.com
www.cyberg.com



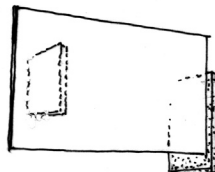
Ceiling Fixture

F&W #61
5" D x 8" W x 20" H



Sconce - Vertical

F&W #62
4" D x 7 1/2" W x 13 1/2" H
ADA Compliant



Sconce - Horizontal

F&W #63
4" D x 12" W x 9" H
ADA Compliant

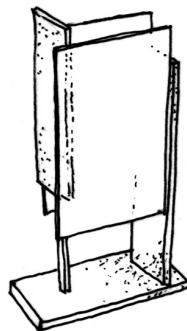


Table Lamp

F&W #64
5" D x 10" W x 18" H

